

Electronic technical documents management



Shipdex
CONSULTING

Marco Vatteroni
Shipdex author & technical manager
Shipdex Consulting Director

Summary of my presentation

- ❑ Why I am here
- ❑ Electronic technical documents management in the aero-space, defence and civil aviation market (the **S1000D** spec)
- ❑ Electronic technical documents management in the shipping market (the **Shipdex** protocol)
- ❑ Demonstrations
 - Standard structure of a Shipdex dataset
 - How to navigate through Shipdex data (the **Shipdex Viewer**)

❖ Shipdex Consulting Ltd (2016 -)

- Shipdex Consulting Director
- Shipdex author and technical manager inside the Shipdex organization
- Shipdex representative at S1000D Steering Committee

❖ SpecTec Group (2006 - 2016)

- ILS and Shipdex manager

❖ Italian Fincantieri shipyard (2002 - 2006)

- IT manager at ILS Department
- PM of technical publication projects based on international **S1000D™** specification:
 - Italian Navy “new aircraft carrier Cavour”
 - Italian-French “Horizon Frigates”
 - Italian-German “U212A submarines”
- PM of CBTs production projects for U212A submarines



The Shipdex Consulting Ltd

(Italy – Cyprus – Hong Kong)

- We are acting as Technical Manager inside the non-profit Shipdex organization
- Our mission is to offer the best support to all those organizations who decide to approach the Shipdex Protocol
- Our services and software products are directed to any kind of organization working in the shipping market, as:
 - ✓ Manufacturers
 - ✓ Shipyards
 - ✓ Ship-owners
 - ✓ IT companies
 - ✓ Engineering companies
 - ✓ Class Societies



The Shipdex Consulting Ltd

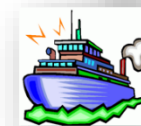
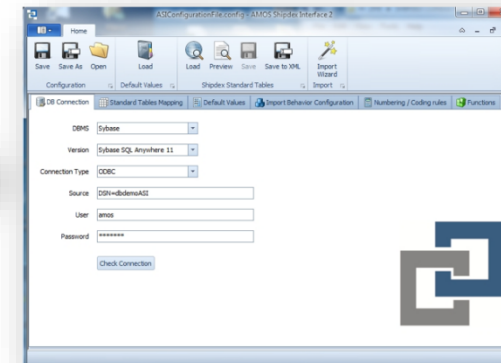
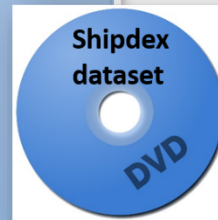
(Italy – Cyprus – Hong Kong)

○ Our services:

- ✓ Shipdex training and consultancy
- ✓ Assistance during the Shipdex process start-up
- ✓ Conversion of pdf manuals to Shipdex protocol
- ✓ Support in developing Shipdex compliant IT applications
- ✓ Production of Computer Based Training

○ Our software tools:

- ✓ Shipdex Enterprise Management Suite
- ✓ AMOS Shipdex Interface 2



Visit us on www.shipdexconsulting.com



S1000D, the international specification for technical publications utilising a Common Source Data Base (CSDB).

Since its inception about 30 years ago, S1000D has grown to be used widely around the world. Currently, its uses include:

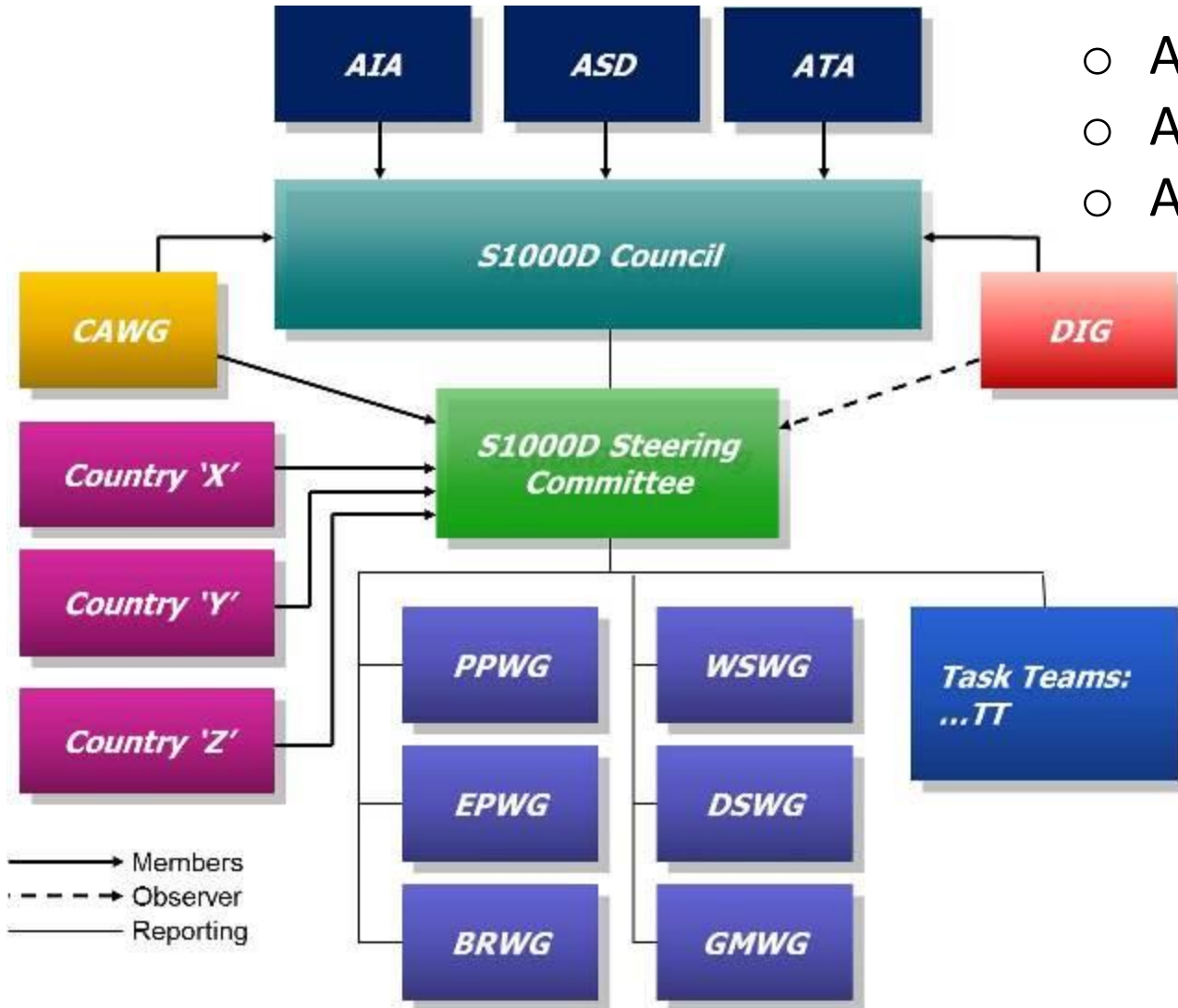
- Defense systems: air, sea, and land products
- Civil aviation products
- Construction industry products
- **Shipping industry products (*Shipdex*)**



S1000D International Organization

S1000D is sponsored by:

- AeroSpace Industries Association of America
- AeroSpace and Defence Industries of Europe
- Air Transport Association e-Business Program

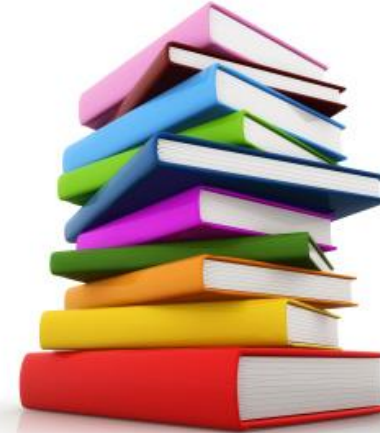


Shipdex™ has been granted an Observer status at S1000D Steering Committee, an evidence that Shipdex™ has been recognised and accepted by the S1000D community

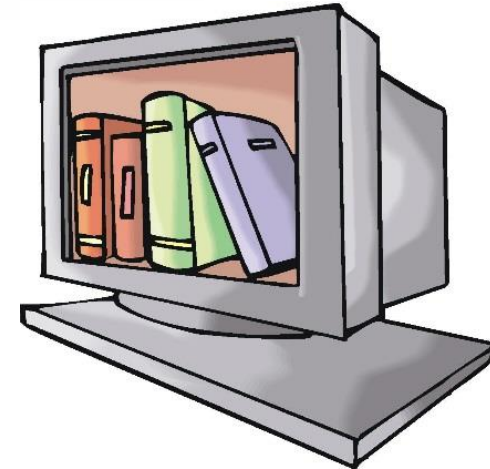
The S1000D main benefits

- Non-proprietary, based on open standards
- Data Dictionary, standardization of naming conventions
- Ease of data exchange, smaller, **xml based files structures**
- Can be linked with source engineering data and can be used to enhance integrated data environment
- Permits the addition of extra documentation features such as multimedia contents, enabling better end user experience
- The information are gathered inside a number of xml files (called **Data Modules**) governed by mandatory S1000D xml schemas
- The S1000D data module concept allows to avoid data duplication and data reusability (WORM concept)

- **PAPER OR PDF FORMAT**
- **DIFFERENT STRUCTURE**
- **DIFFERENT LAYOUT**
- **DIFFERENT QUALITY**



Paper manuals



PDF manuals

In other words:
Today we produce, exchange and use
“pages of information”

- **HIGH MANAGEMENT COSTS**
- **HIGH RISK TO USE NOT UPDATED INFORMATION**
- **HIGH RISK TO BUY THE WRONG SPARE PARTS**
- **NO INTEGRATION WITH COMPANY IT SYSTEMS**

In other words:
LOW QUALITY AT HIGH COST



**A
Nightmare !**

The Effective Solution is



from **pages**
of information

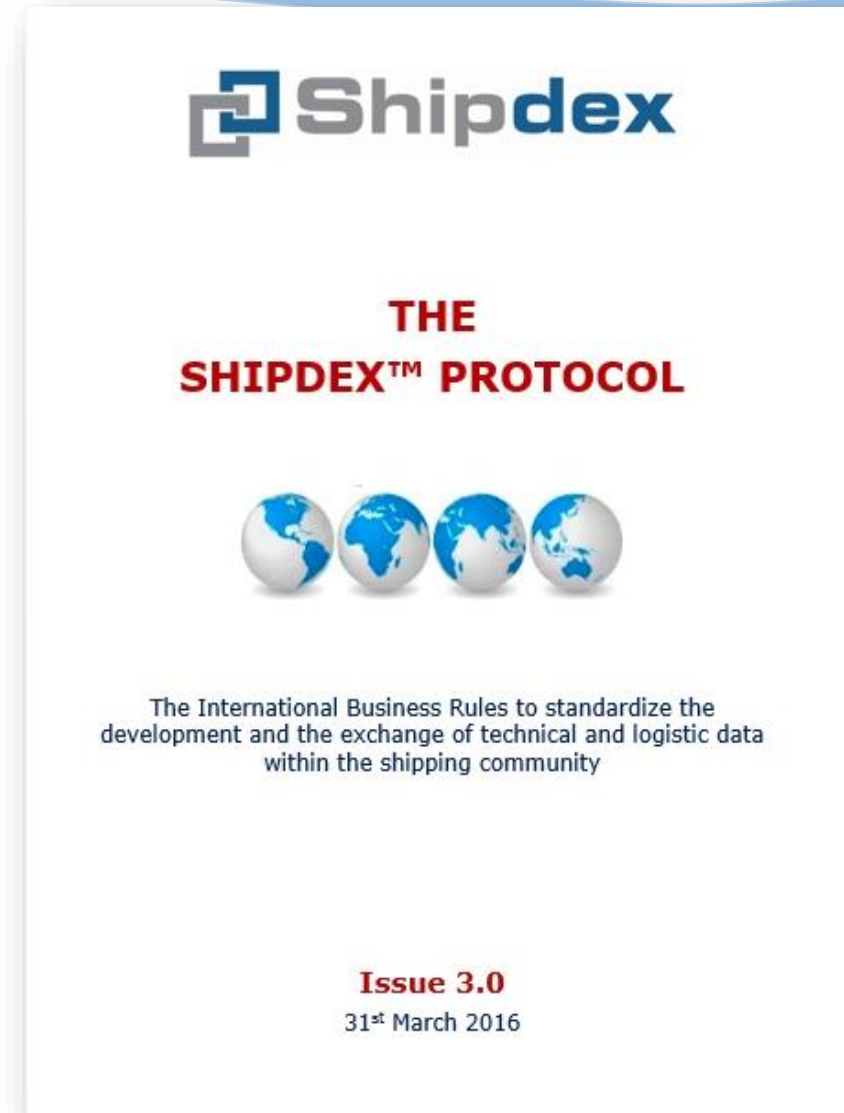
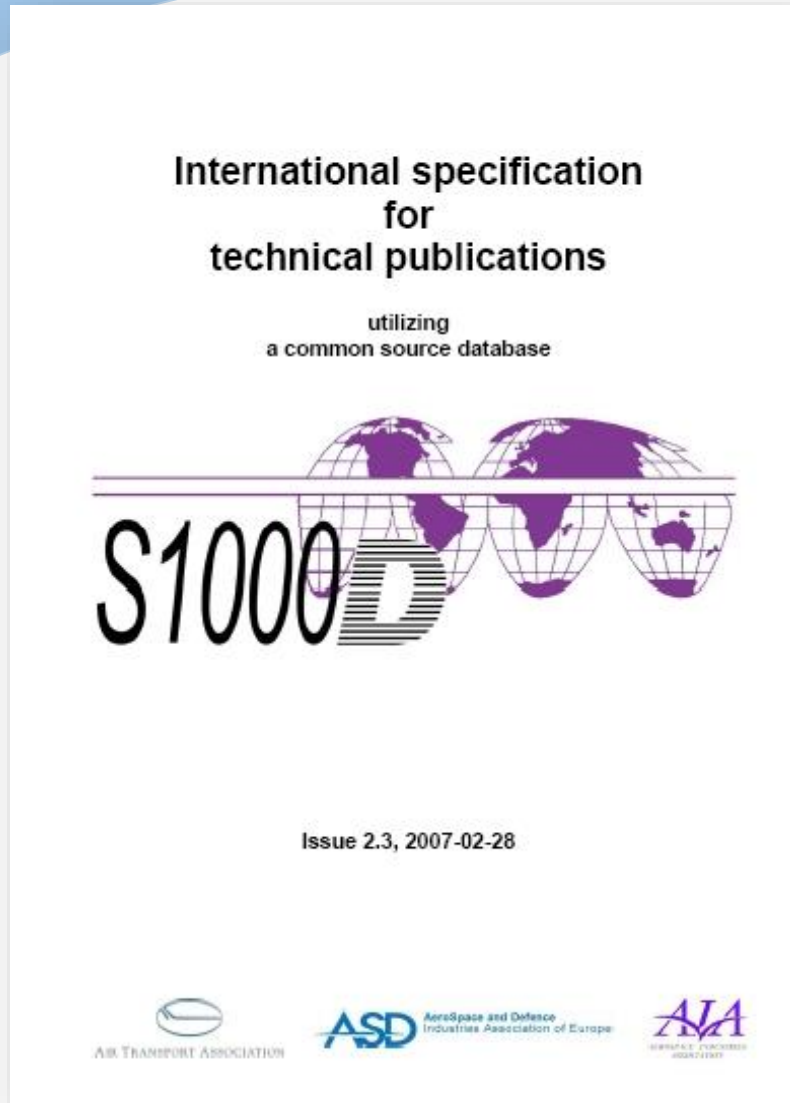


The Effective Solution is



to **information**





HIGHER QUALITY AT LOWER COST

Today, the Shipdex Organization is composed of:

SPSC - Steering Committee



SPMG - Maintenance Group



SPSC – SPMG members (founder members)

- Alfa Laval
- Grimaldi Group
- Intership Navigation
- MacGregor
- Man Diesel & Turbo
- Mastermind ShipManagement
- Shipdex Consulting Ltd. (*technical manager*)
- Yanmar Company

SPMG joined members

- Rolls-Royce Marine
- Furuno

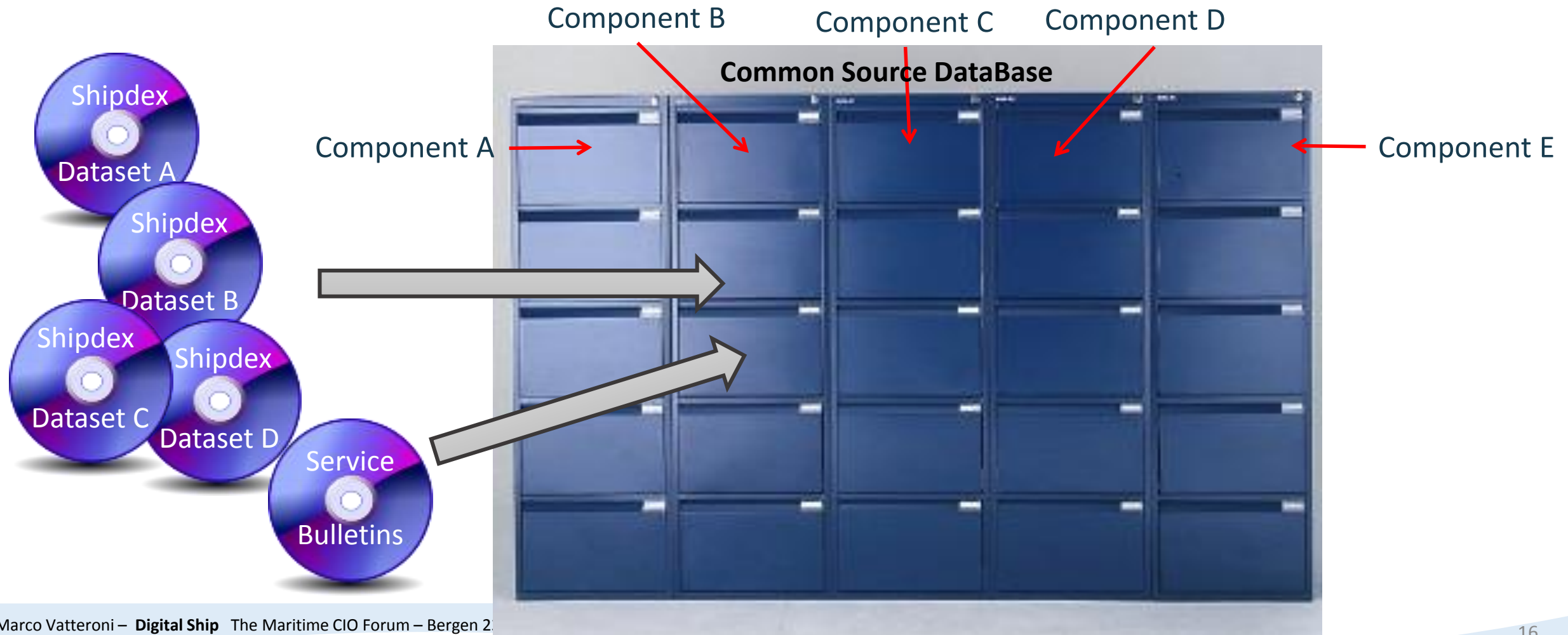


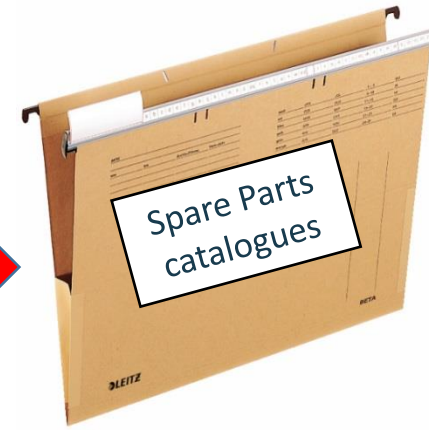
Shipdex (Ship Data Exchange)

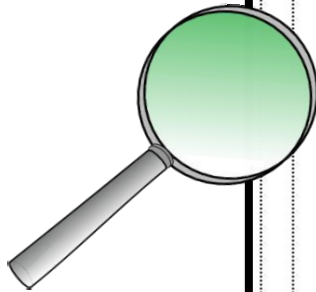
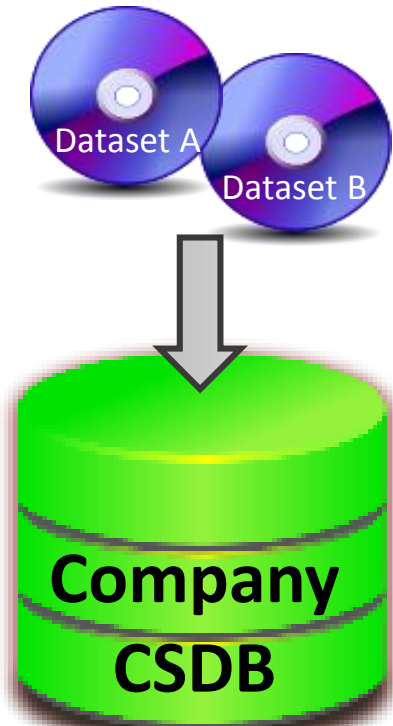
is an independent and non-proprietary standard protocol, open to all shipping players who wish to adopt it

- ❑ Shipdex is fully compliant with S1000D spec
- ❑ Shipdex is a collection of business and writing rules developed to standardize and improve the production and the exchange of electronic technical information
- ❑ Shipdex offers ship-owners the opportunity to:
 - create a technical document repository (the Common Source DataBase **CSDB**)
 - eliminate or reduce the traditional pain and high costs in managing and importing technical data into corporate IT systems (ERP, CMMS, etc.)

The Common Source DataBase (CSDB)







```
<csn csn="HM0-00-0002-00 -000 " ind="1" item="000 ">
  <isn isn="00A">
    <qna>1</qna>
    <mfc>A0984</mfc>
    <pnr>044TR14014-0501-8013015205</pnr>
    <pas>
      <dfp>Technical FW Pump</dfp>
      <uoi>pc</uoi>
      <pcs uom="pc">
        <qui/>
      </pcs>
    </pas>
    <cbs>
      <dfi/>
    </cbs>
    <ces>
      <snr/>
      <smr/>
    </ces>
  </isn>
</csn>
<csn csn="HM0-00-0002-00 -001 " ind="2" item="001 ">
  <isn isn="00A">
    <qna>1</qna>
    <mfc>A0984</mfc>
    <pnr>020TR14014-1601-8013015205</pnr>
    <pas>
      <dfp>Pump BT 312</dfp>
      <uoi>pc</uoi>
      <pcs uom="pc">
```

xml catalogue from maker A

```
<csn csn="HF2-11-0000-00 -001 " ind="2" item="001 ">
  <isn isn="00A">
    <qna>1</qna>
    <mfc>S0622</mfc>
    <pnr>000-020-943-00</pnr>
    <pas>
      <dfp>Antenna Unit IC-118</dfp>
      <uoi>pc</uoi>
      <pcs uom="pc">
        <qui/>
      </pcs>
    </pas>
    <cbs>
      <dfi/>
    </cbs>
    <ces>
      <snr/>
      <smr/>
    </ces>
  </isn>
</csn>
<csn csn="HF2-11-0000-00 -002 " ind="2" item="002 ">
  <isn isn="00A">
    <qna>1</qna>
    <mfc>S0622</mfc>
    <pnr>000-043-429-00</pnr>
    <pas>
      <dfp>Alarm Unit IC-306</dfp>
      <uoi>pc</uoi>
      <pcs uom="pc">
```

xml catalogue from maker B

```
<csn csn="HM0-00-0002-00 -000 " ind="1" item="000 ">
<isn isn="00A">
```

```
<csn csn="HF2-11-0000-00 -001 " ind="2" item="001 ">
<isn isn="00A">
```

Shipdex Viewer

File Content Utility Window Help

Table of Content

- S0622#00001#FELCOM18#2-1
 - INFOSET_DESCRIPTION_OPERATION
 - INFOSET_IPD
 - FURUNO-AAAA
 - FURUNO - Supplier list
 - INMARSAT-C MES FELCOM18 - Spare Parts**
 - INMARSAT-C MES FELCOM18 - Support Equipment
 - INMARSAT-C MES FELCOM18 - Supplies
 - INFOSET_MAINTENANCE_PROCEDURE
 - INFOSET_TROUBLESHOOTING

INMARSAT-C MES FELCOM18 - Spare Parts

Shipdex

INMARSAT-C MES FELCOM18 - Spare Parts

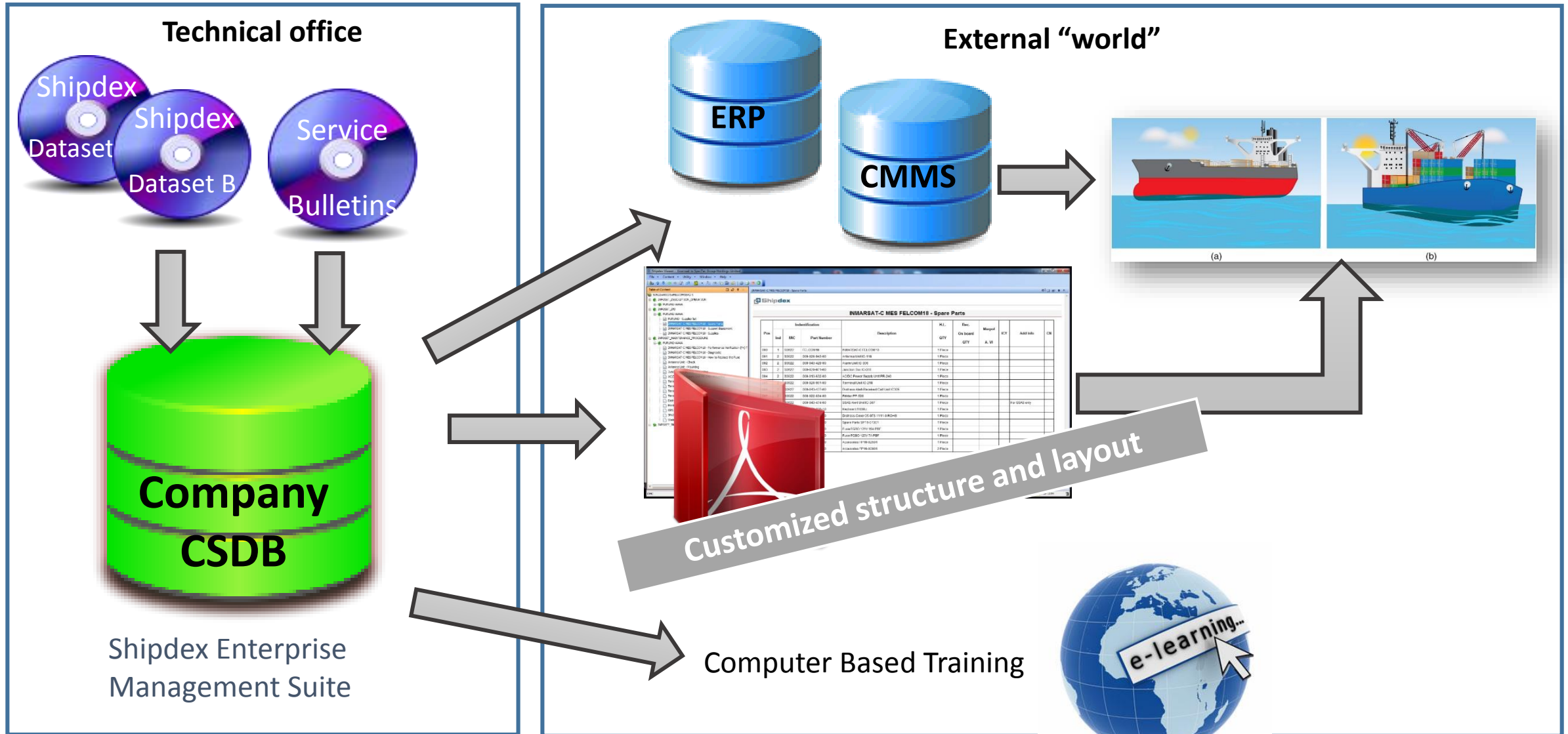
Data Module Issue:001,Date:11-12-2013 Type:new

Pos	Identification			Description	H.L. QTY	Rec. On board QTY	Marpol A. VI	ICY	Add Info	CN
	Ind	MIC	Part Number							
000	1	S0622	FELCOM18	INMARSAT-C FELCOM18	1 Piece					
001	2	S0622	000-020-943-00	Antenna Unit IC-118	1 Piece					
002	2	S0622	000-043-429-00	Alarm Unit IC-306	1 Piece					
003	2	S0622	000-020-971-00	Junction Box IC-318	1 Piece					
004	2	S0622	000-013-632-00	AC/DC Power Supply Unit PR-240	1 Piece					
005	2	S0622	000-020-961-00	Terminal Unit IC-218	1 Piece					
006	2	S0622	000-043-427-00	Distress Alert-Received Call Unit IC305	1 Piece					
007	2	S0622	000-022-694-00	Printer PP-520	1 Piece					
008	2	S0622	000-043-474-00	SSAS Alert Unit IC-307	1 Piece				For SSAS only	
009	2	S0622	000-176-235-10	Keyboard 5139U	1 Piece					
010	2	S0622	100-274-720-10	Distress Cover 05-073-1111-0 ROHS	1 Piece					
011	2	S0622	004-439-370-00	Spare Parts SP16-01301	1 Piece					
012	3	S0622	000-155-827-10	Fuse FGBO 125V 15A PBF	1 Piece					
013	3	S0622	000-155-831-10	Fuse FGBO 125V 7A PBF	1 Piece					
014	2	S0622	001-175-970-00	Accessories FP16-02501	1 Piece					
015	2	S0622	004-448-050-00	Accessories FP16-00901	2 Piece					

DMC DMC-FURUNO-AAAA-HF2-11-0000-00000-941A-A_001_en

24M of 127M

**The (free of charge)
Shipdex Viewer
to navigate and print
Shipdex datasets**



How you can get more detailed information about Shipdex

- Contacting me directly at mv@shipdexconsulting.com
- On www.shipdex.com or www.shipdexconsulting.com
- The official Shipdex channel on YouTube
(<https://www.youtube.com/channel/UCbfSVC4KZOksRg6oQOvg9Q/videos>)



SHIPDEX Lesson 4 How to import Shipdex data into a CMMS
295 views • 1 year ago



SHIPDEX Lesson 3 The Viewer
412 views • 1 year ago



SHIPDEX Lesson 2 The dataset
542 views • 1 year ago



SHIPDEX Lesson 1 Introduction
923 views • 1 year ago



How Shipdex Works
881 views • 1 year ago